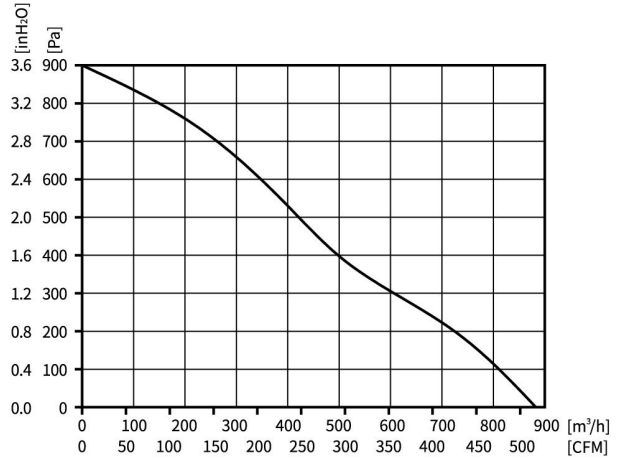
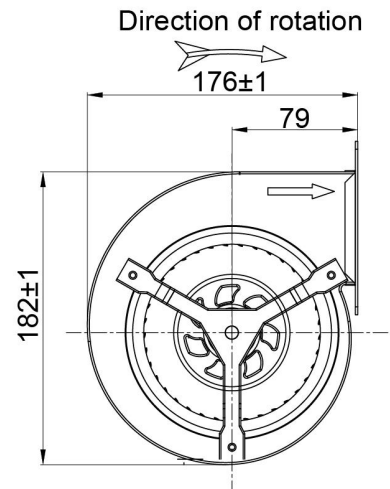
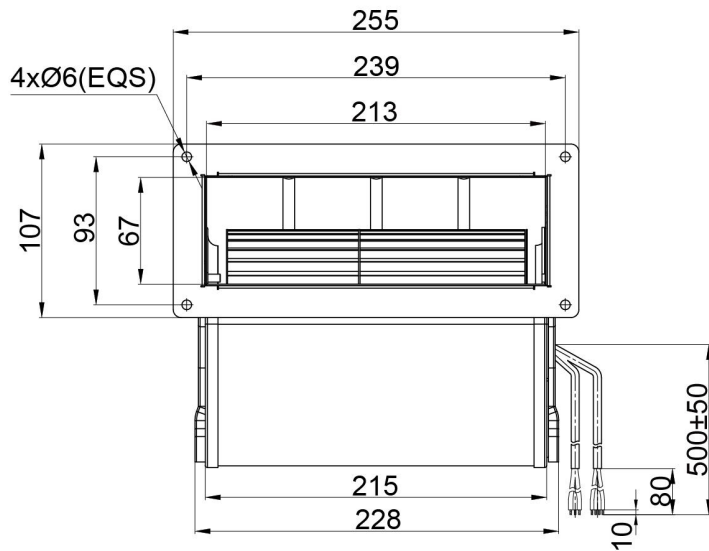


# EC Blower Dual Inlet Ø133mm



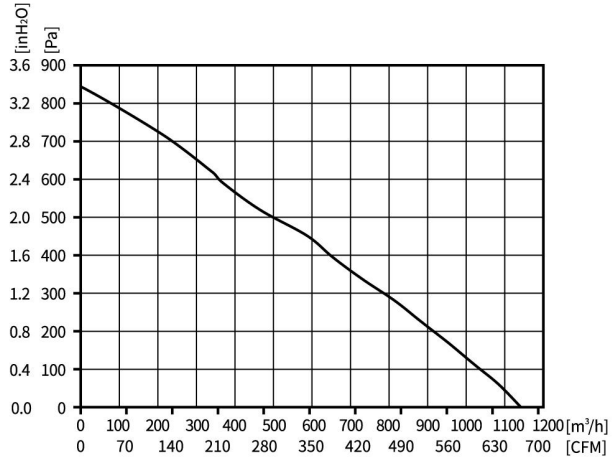
Motor Type EC BRUSHLESS EXTERNAL ROTOR MOTOR	Speed Control 0-10VDC/PWM	Protection Type IP55	Insulation Class B	Operating Temperature -25°C ~ +60°C	Weight 3.2KG	Wiring Mode E1
---	------------------------------	-------------------------	-----------------------	--	-----------------	-------------------



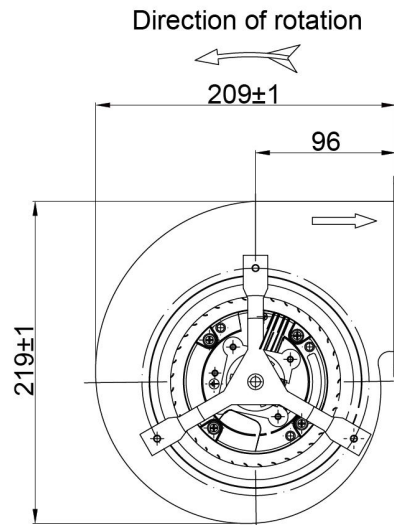
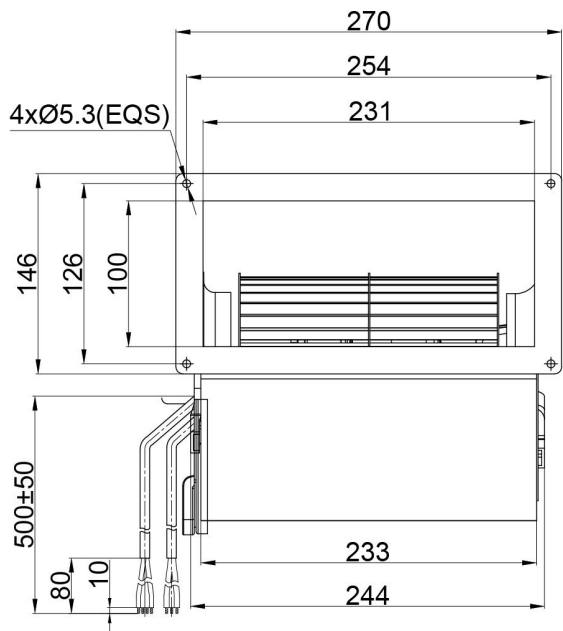
Dual Inlet Blowers

Model	Motor	Bearing System	Rated Voltage	Frequency	Rated Current	Rated Power	Rated Speed	Air Flow	Air Pressure	Sound Level
Part No.	Type	B/S	VAC	Hz	A	W	RPM	M <sup>3</sup> /H	Pa	dB(A)
PD3N133B2E-TZ0	BE72EC	BALL	230	50/60	1.0	140	1900	880	900	67

# EC Blower Dual Inlet Ø146mm



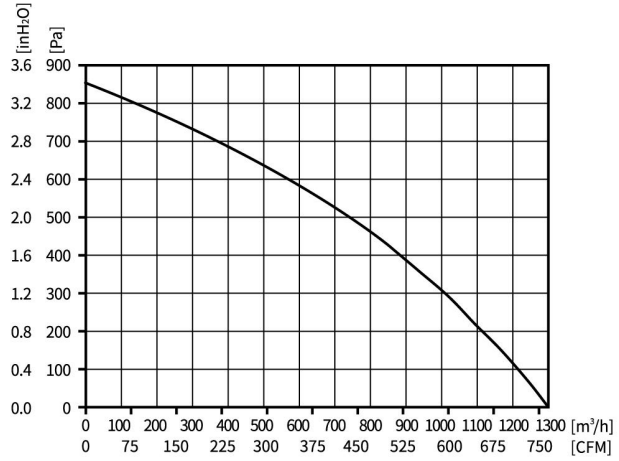
Motor Type EC BRUSHLESS EXTERNAL ROTOR MOTOR	Speed Control 0-10VDC/PWM	Protection Type IP55	Insulation Class B	Operating Temperature -25°C ~ +60°C	Weight 4.1KG	Wiring Mode E1
---	------------------------------	-------------------------	-----------------------	--	-----------------	-------------------



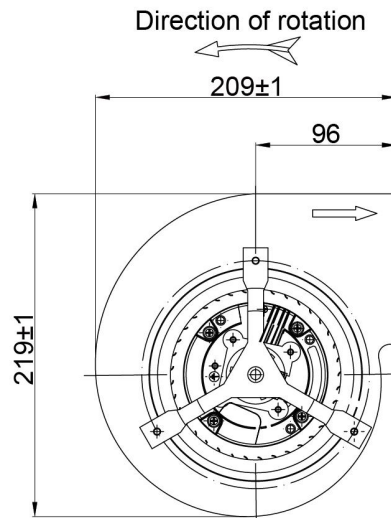
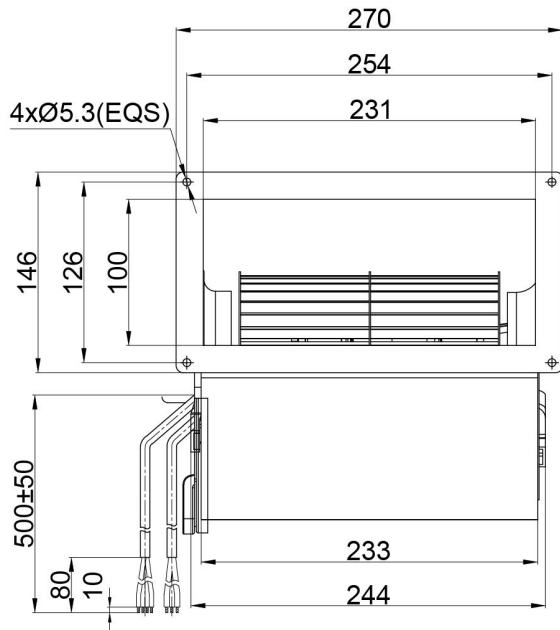
Dual Inlet Blowers

Model Part No.	Motor Type	Bearing System B/S	Rated Voltage VAC	Frequency Hz	Rated Current A	Rated Power W	Rated Speed RPM	Air Flow M <sup>3</sup> /H	Air Pressure Pa	Sound Level dB(A)
PD3N146B2E-TZ0	BE72EC	BALL	230	50/60	1.2	170	1500	1140	845	68

# EC Blower Dual Inlet Ø146mm



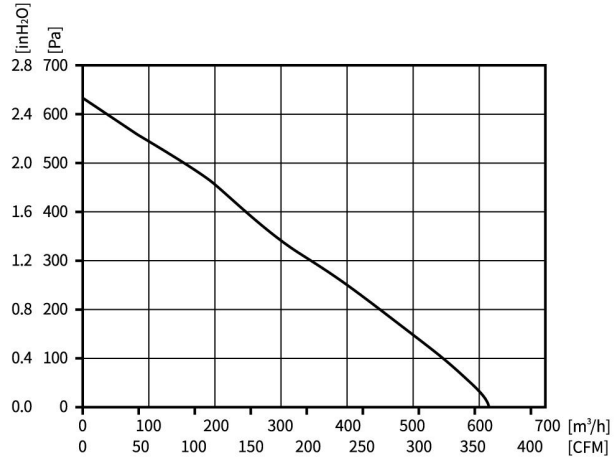
Motor Type EC BRUSHLESS EXTERNAL ROTOR MOTOR	Speed Control 0-10VDC/PWM	Protection Type IP55	Insulation Class B	Operating Temperature -25°C ~ +60°C	Weight 4.4KG	Wiring Mode E2
---	------------------------------	-------------------------	-----------------------	--	-----------------	-------------------



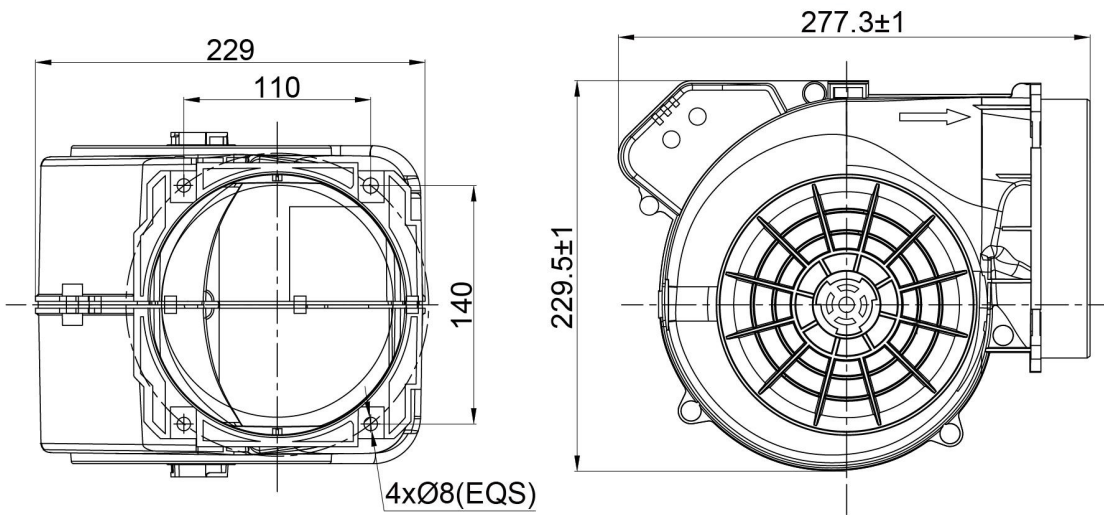
Dual Inlet Blowers

Model	Motor	Bearing System	Rated Voltage	Frequency	Rated Current	Rated Power	Rated Speed	Air Flow	Air Pressure	Sound Level
Part No.	Type	B/S	VAC	Hz	A	W	RPM	M <sup>3</sup> /H	Pa	dB(A)
PD3N146B2E-MZ0	BE92EC	BALL	230	50/60	1.55	220	1850	1300	850	72

# EC Blower Dual Inlet Ø146mm



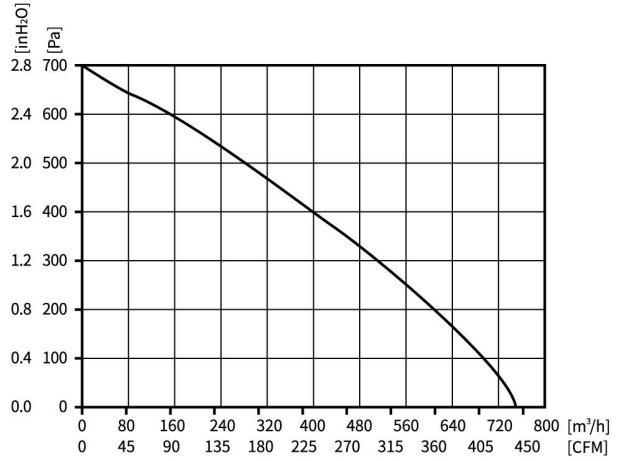
Motor Type EC BRUSHLESS EXTERNAL ROTOR MOTOR	Speed Control 0-10VDC/PWM	Protection Type IP55	Insulation Class B	Operating Temperature -25°C ~ +60°C	Weight 2.4KG	Wiring Mode E1
---	------------------------------	-------------------------	-----------------------	--	-----------------	-------------------



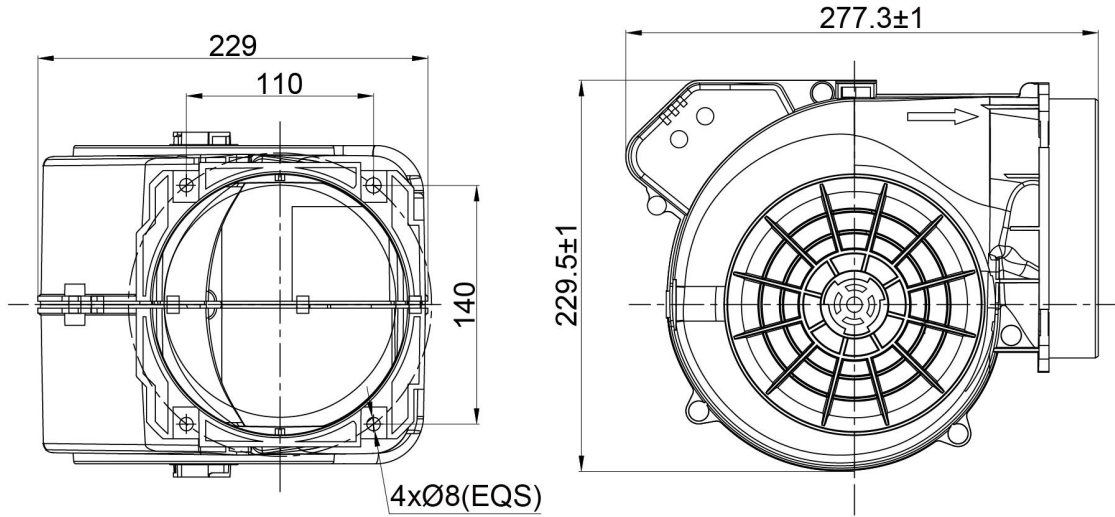
Dual Inlet Blowers

Model Part No.	Motor Type	Bearing System B/S	Rated Voltage VAC	Frequency Hz	Rated Current A	Rated Power W	Rated Speed RPM	Air Flow M <sup>3</sup> /H	Air Pressure Pa	Sound Level dB(A)
PD3N146B2E-RV0	BE72EC	BALL	230	50/60	0.65	85	1400	610	620	63

# EC Blower Dual Inlet Ø146mm



Motor Type EC BRUSHLESS EXTERNAL ROTOR MOTOR	Speed Control 0-10VDC/PWM	Protection Type IP55	Insulation Class B	Operating Temperature -25°C ~ +60°C	Weight 2.4KG	Wiring Mode E1
---	------------------------------	-------------------------	-----------------------	--	-----------------	-------------------



Dual Inlet Blowers

Model	Motor	Bearing System	Rated Voltage	Frequency	Rated Current	Rated Power	Rated Speed	Air Flow	Air Pressure	Sound Level
Part No.	Type	B/S	VAC	Hz	A	W	RPM	M <sup>3</sup> /H	Pa	dB(A)
PD3N146B2E-RV1	BE72EC	BALL	230	50/60	1.1	145	1600	750	700	66