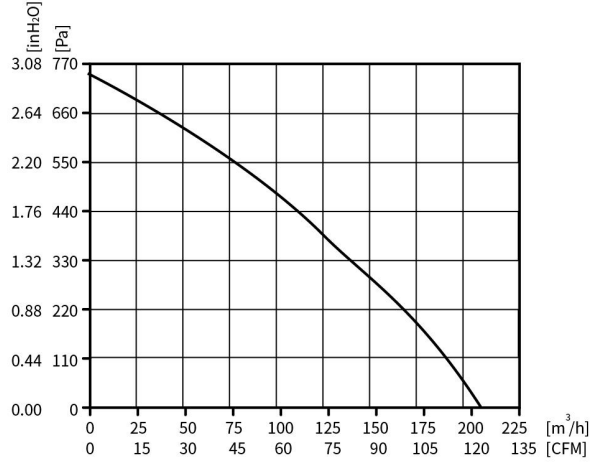
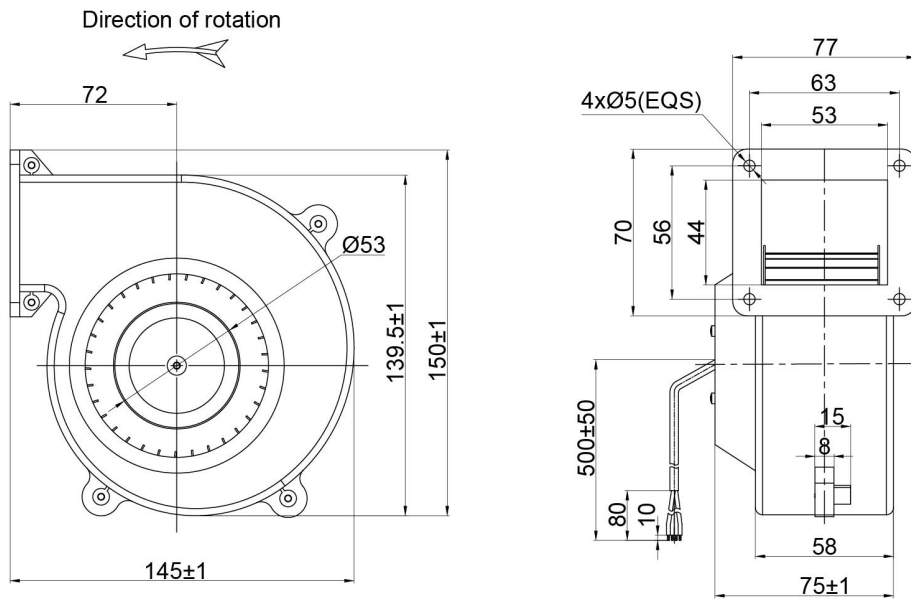


DC Blower Single Inlet Ø97mm



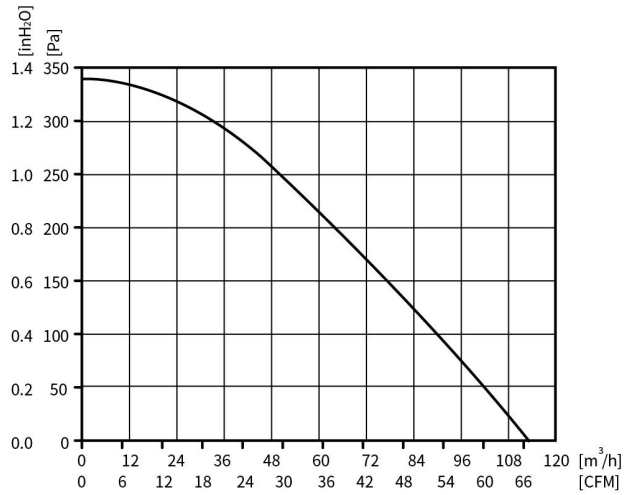
Motor Type DC BRUSHLESS EXTERNAL ROTOR MOTOR	Speed Control 0~10VDC/PWM	Protection Type IP44	Insulation Class B	Operating Temperature -25°C~+60°C	Weight 0.84KG	Wiring Mode D1
---	------------------------------	-------------------------	-----------------------	--------------------------------------	------------------	-------------------

Single Inlet Blowers

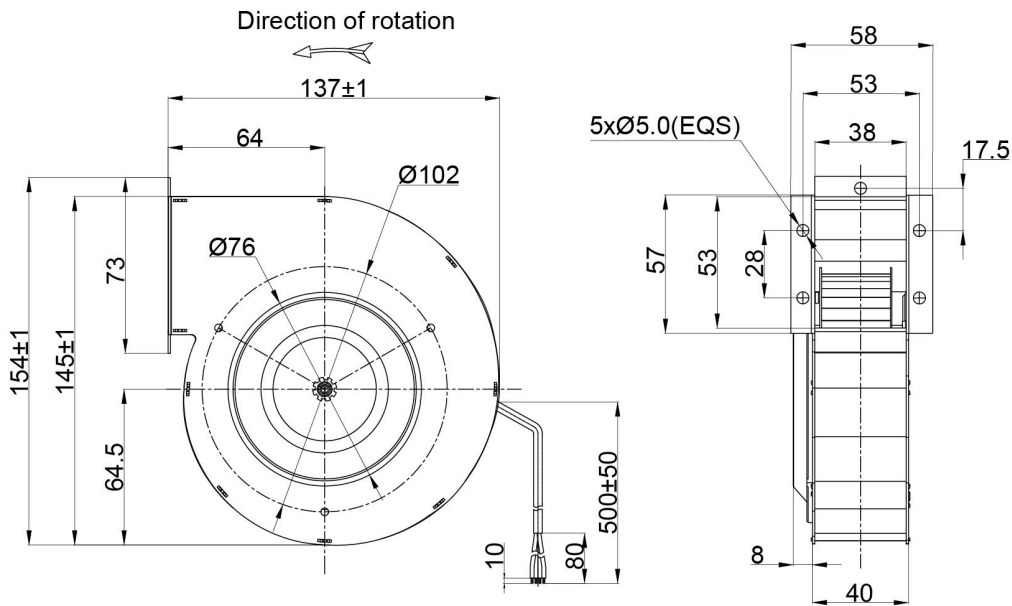


Model	Motor	Bearing System	Rated Voltage	Operating Voltage	Rated Current	Rated Power	Rated Speed	Air Flow	Air Pressure	Sound Level
Part No.	Type	B/S	VDC	VDC	A	W	RPM	M ³ /H	Pa	dB(A)
PS3N097B24M	BE53DC	BALL	24	16~28	3.2	76.8	3650	210	740	67
PS3N097B48M	BE53DC	BALL	48	36~57	1.6	76.8	3650	210	740	67

DC Blower Single Inlet Ø100mm



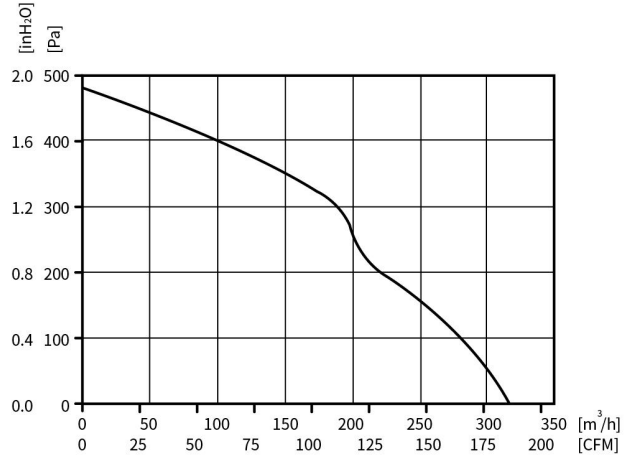
Motor Type DC BRUSHLESS EXTERNAL ROTOR MOTOR	Speed Control 0~10VDC/PWM	Protection Type IP44	Insulation Class B	Operating Temperature -25°C~+60°C	Weight 0.66KG	Wiring Mode D1
---	------------------------------	-------------------------	-----------------------	--------------------------------------	------------------	-------------------



Single Inlet Blowers

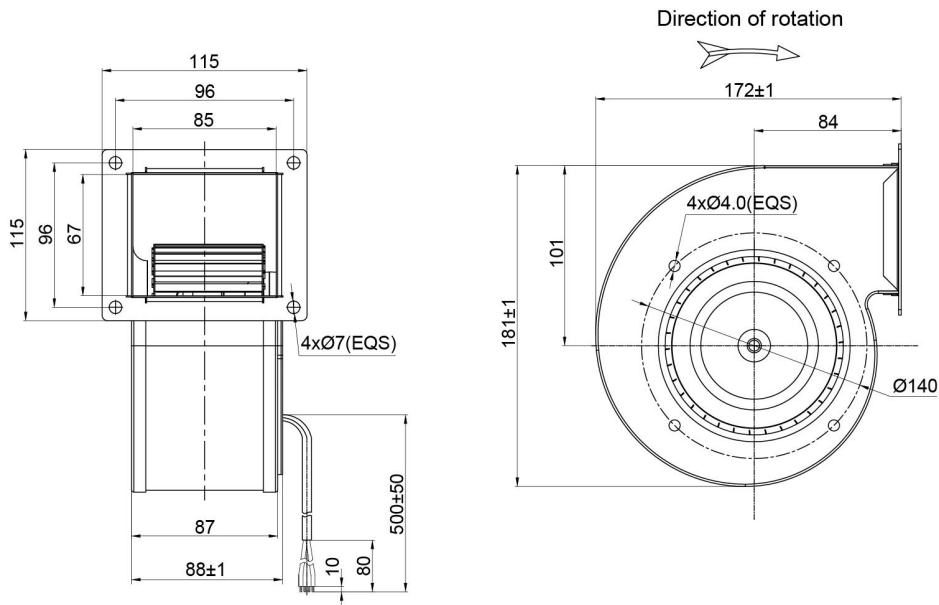
Model	Motor	Bearing System	Rated Voltage	Operating Voltage	Rated Current	Rated Power	Rated Speed	Air Flow	Air Pressure	Sound Level
Part No.	Type	B/S	VDC	VDC	A	W	RPM	M ³ /H	Pa	dB(A)
PS3N100B24M	BE53DC	BALL	24	16~28	1	24	2800	113.4	338	56
PS3N100B48M	BE53DC	BALL	48	36~57	0.5	24	2800	113.4	338	56

DC Blower Single Inlet Ø120mm



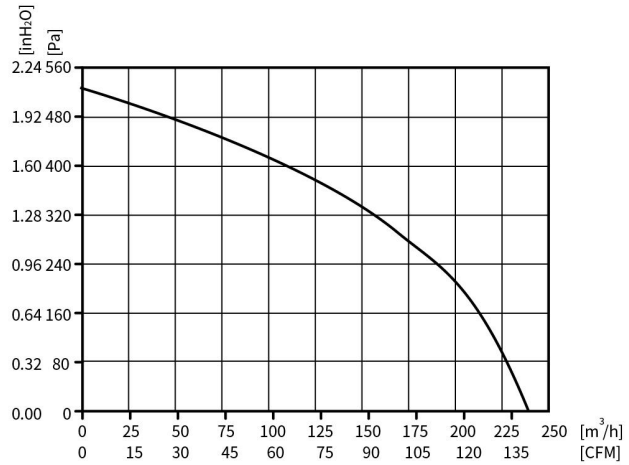
Motor Type DC BRUSHLESS EXTERNAL ROTOR MOTOR	Speed Control 0~10VDC/PWM	Protection Type IP44	Insulation Class B	Operating Temperature -25°C~+60°C	Weight 1.46KG	Wiring Mode D1
---	------------------------------	-------------------------	-----------------------	--------------------------------------	------------------	-------------------

Single Inlet Blowers

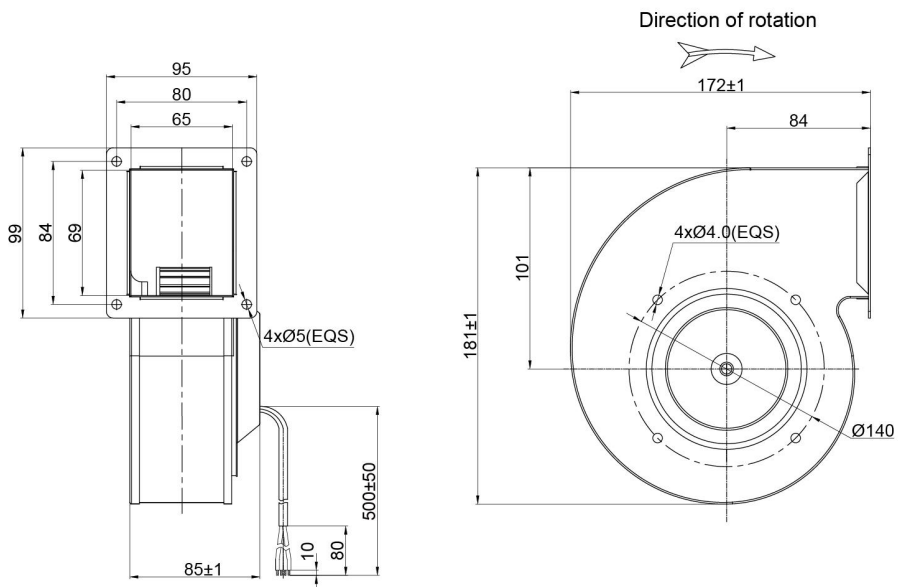


Model	Motor	Bearing System	Rated Voltage	Operating Voltage	Rated Current	Rated Power	Rated Speed	Air Flow	Air Pressure	Sound Level
Part No.	Type	B/S	VDC	VDC	A	W	RPM	M ³ /H	Pa	dB(A)
PS3N120B24M	BE72DC	BALL	24	16~28	3.0	72	2800	317	471	58
PS3N120B48M	BE72DC	BALL	48	36~57	1.5	72	2800	317	471	58

DC Blower Single Inlet $\varnothing 133\text{mm}$



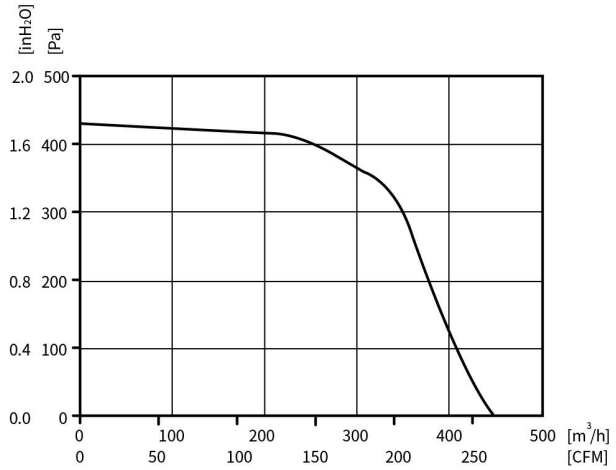
Motor Type DC BRUSHLESS EXTERNAL ROTOR MOTOR	Speed Control 0~10VDC/PWM	Protection Type IP44	Insulation Class B	Operating Temperature -25°C~+60°C	Weight 1.5KG	Wiring Mode D1
---	------------------------------	-------------------------	-----------------------	--------------------------------------	-----------------	-------------------



Single Inlet Blowers

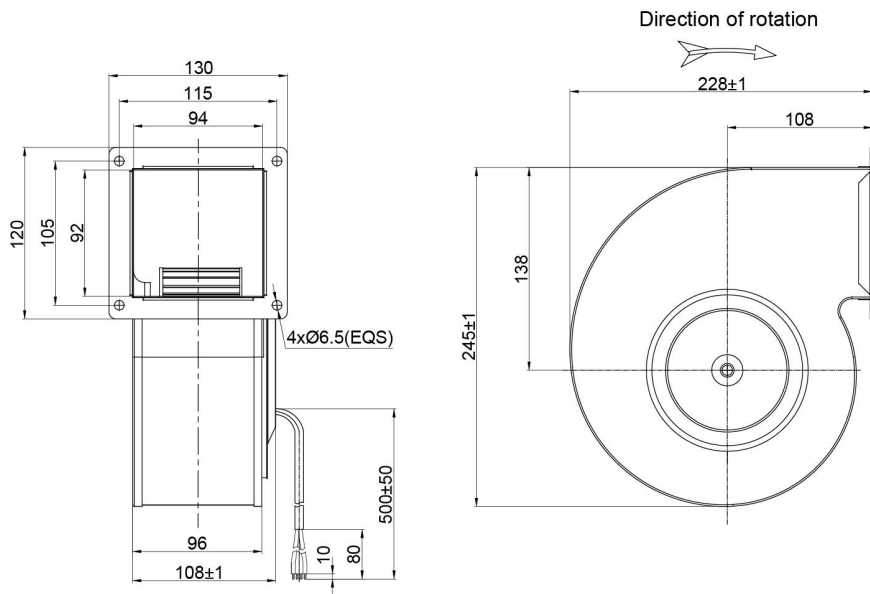
Model	Motor	Bearing System	Rated Voltage	Operating Voltage	Rated Current	Rated Power	Rated Speed	Air Flow	Air Pressure	Sound Level
Part No.	Type	B/S	VDC	VDC	A	W	RPM	M ³ /H	Pa	dB(A)
PS3N133B24M	BE72DC	BALL	24	16~28	2.5	60	2200	238	525	65
PS3N133B48M	BE72DC	BALL	48	36~57	1.25	60	2200	238	525	65

DC Blower Single Inlet Ø140mm



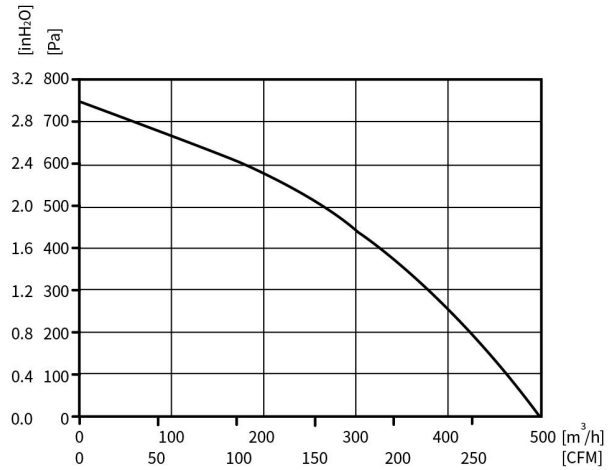
Motor Type DC BRUSHLESS EXTERNAL ROTOR MOTOR	Speed Control 0~10VDC/PWM	Protection Type IP44	Insulation Class B	Operating Temperature -25°C~+60°C	Weight 2.3KG	Wiring Mode D1
---	------------------------------	-------------------------	-----------------------	--------------------------------------	-----------------	-------------------

Single Inlet Blowers

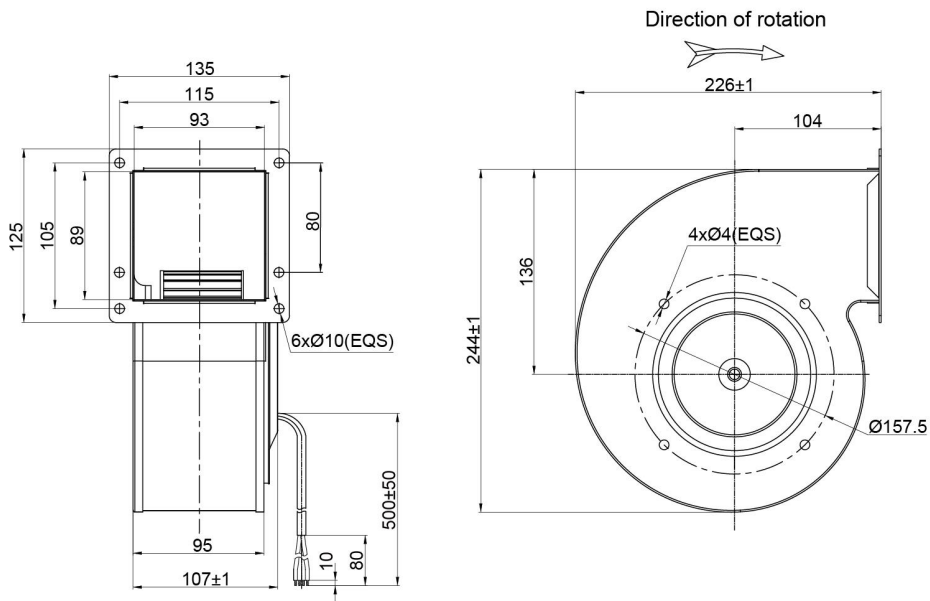


Model	Motor	Bearing System	Rated Voltage	Operating Voltage	Rated Current	Rated Power	Rated Speed	Air Flow	Air Pressure	Sound Level
Part No.	Type	B/S	VDC	VDC	A	W	RPM	M ³ /H	Pa	dB(A)
PS3N140B24M	BE72DC	BALL	24	16~28	3.3	80	1800	450	420	65
PS3N140B48M	BE72DC	BALL	48	36~57	1.67	80	1800	450	420	65

DC Blower Single Inlet Ø150mm



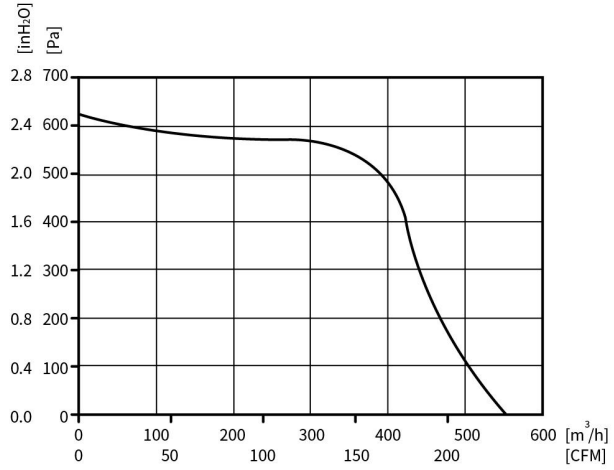
Motor Type DC BRUSHLESS EXTERNAL ROTOR MOTOR	Speed Control 0~10VDC/PWM	Protection Type IP44	Insulation Class B	Operating Temperature -25°C~+60°C	Weight 2.5KG	Wiring Mode D2
---	------------------------------	-------------------------	-----------------------	--------------------------------------	-----------------	-------------------



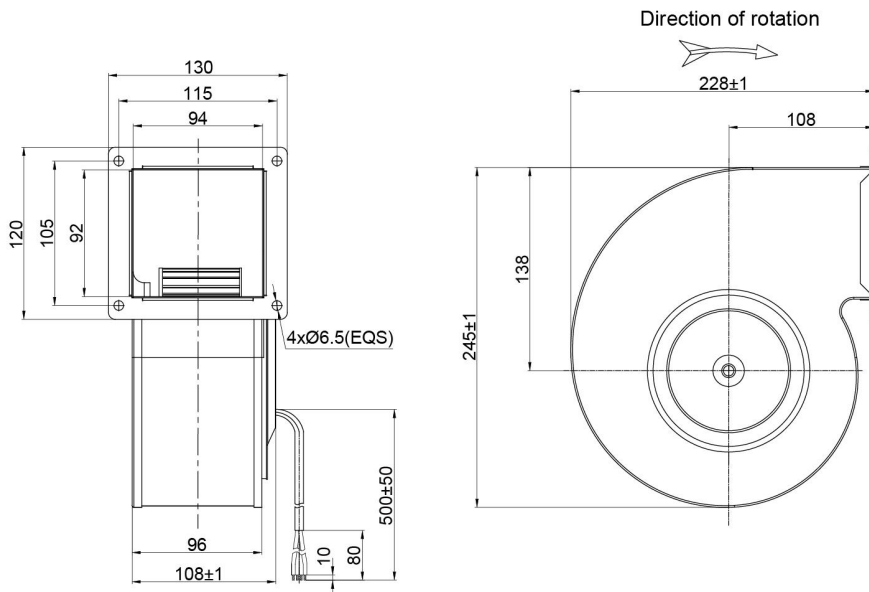
Single Inlet Blowers

Model Part No.	Motor Type	Bearing System B/S	Rated Voltage VDC	Operating Voltage VDC	Rated Current A	Rated Power W	Rated Speed RPM	Air Flow M³/H	Air Pressure Pa	Sound Level dB(A)
PS3N150B24M	BE92DC	BALL	24	16~28	4.6	105	2400	500	750	68
PS3N150B48M	BE92DC	BALL	48	36~57	2.3	105	2400	500	750	68

DC Blower Single Inlet Ø160mm



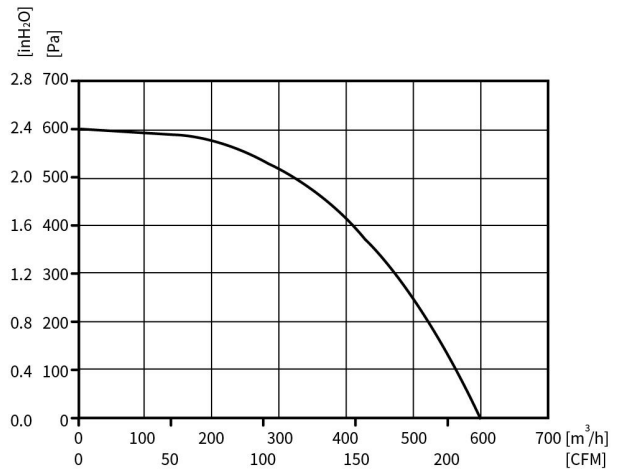
Motor Type DC BRUSHLESS EXTERNAL ROTOR MOTOR	Speed Control 0~10VDC/PWM	Protection Type IP44	Insulation Class B	Operating Temperature -25°C~+60°C	Weight 2.8KG	Wiring Mode D2
---	------------------------------	-------------------------	-----------------------	--------------------------------------	-----------------	-------------------



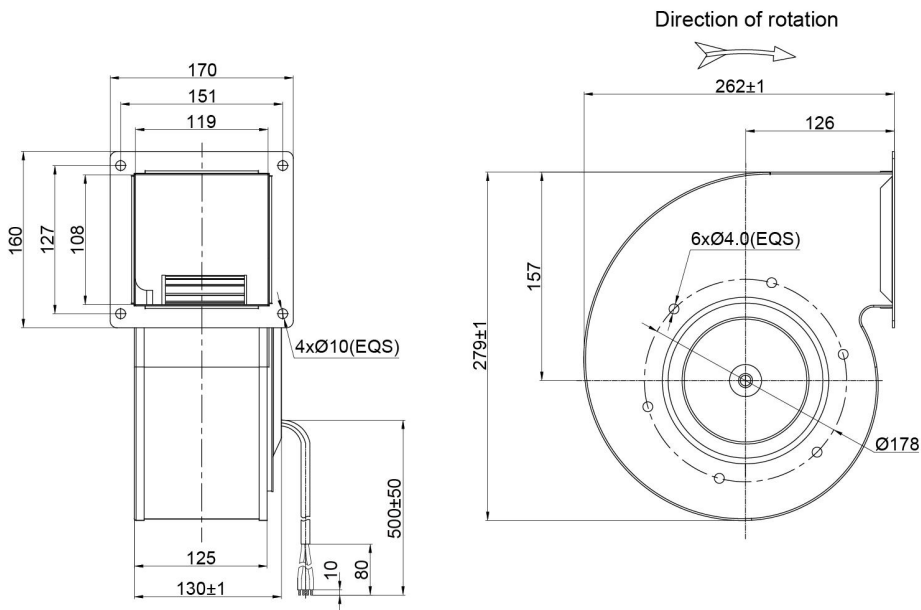
Single Inlet Blowers

Model	Motor	Bearing System	Rated Voltage	Operating Voltage	Rated Current	Rated Power	Rated Speed	Air Flow	Air Pressure	Sound Level
Part No.	Type	B/S	VDC	VDC	A	W	RPM	M ³ /H	Pa	dB(A)
PS3N160B24M	BE92DC	BALL	24	16~28	4.4	105	1950	550	620	62
PS3N160B48M	BE92DC	BALL	48	36~57	2.2	105	1950	550	620	62

DC Blower Single Inlet Ø180mm



Motor Type DC BRUSHLESS EXTERNAL ROTOR MOTOR	Speed Control 0~10VDC/PWM	Protection Type IP44	Insulation Class B	Operating Temperature -25°C~+60°C	Weight 5.6KG	Wiring Mode D2
---	------------------------------	-------------------------	-----------------------	--------------------------------------	-----------------	-------------------



Single Inlet Blowers

Model	Motor	Bearing System	Rated Voltage	Operating Voltage	Rated Current	Rated Power	Rated Speed	Air Flow	Air Pressure	Sound Level
Part No.	Type	B/S	VDC	VDC	A	W	RPM	M³/H	Pa	dB(A)
PS3N180B24M	BE92DC	BALL	24	16~28	3.8	90	1250	600	600	67
PS3N180B48M	BE92DC	BALL	48	36~57	1.9	90	1250	600	600	67